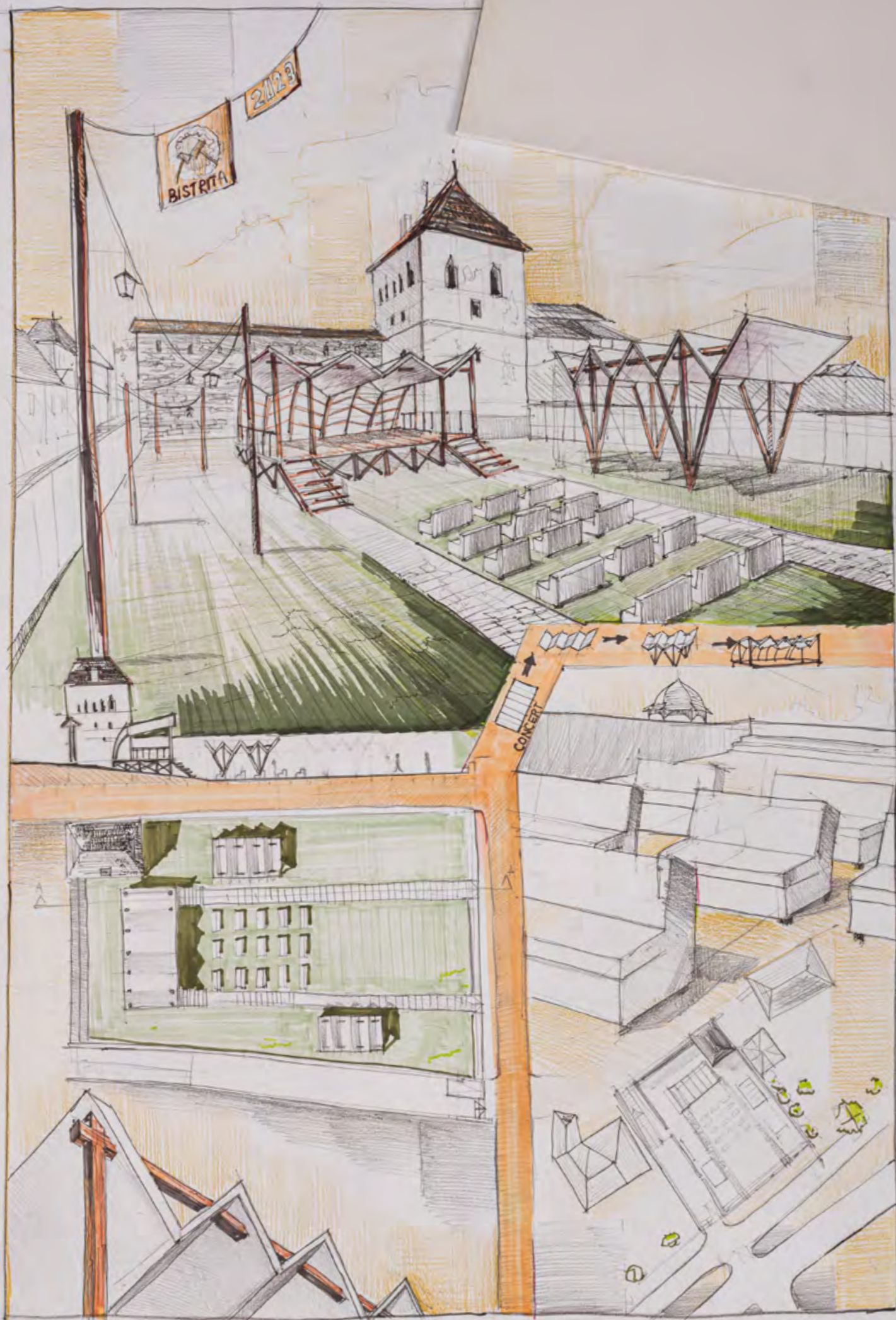




Bistrița 2023

ARHITECTURĂ  
clasa a XII-a, 13 aprilie





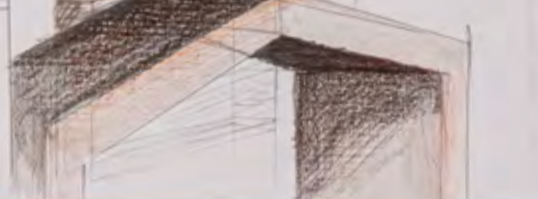
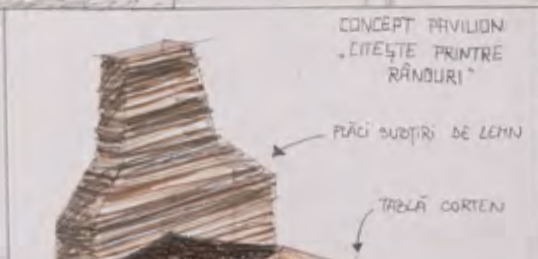




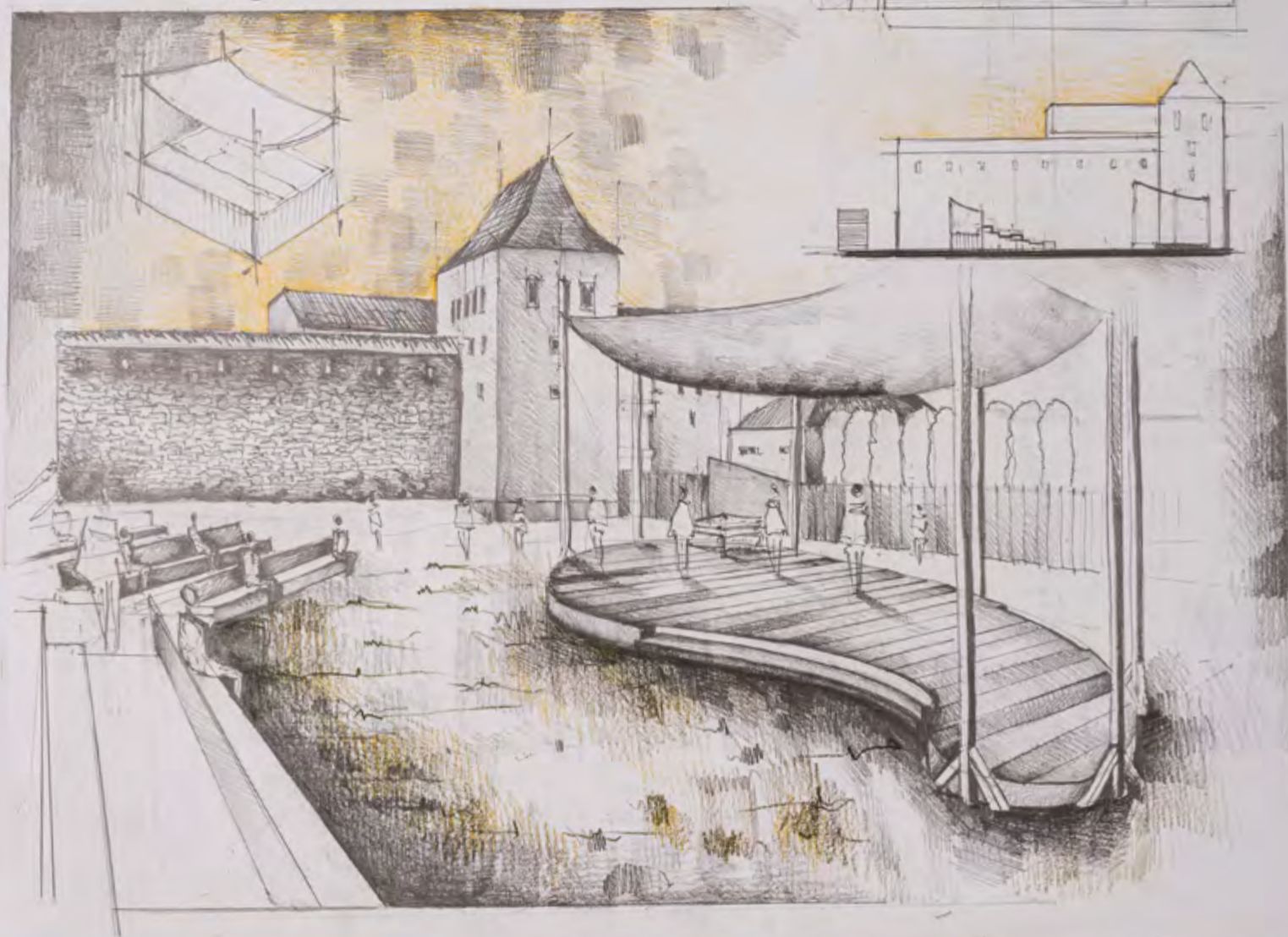
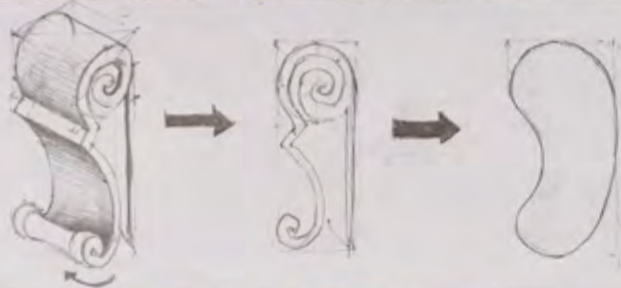
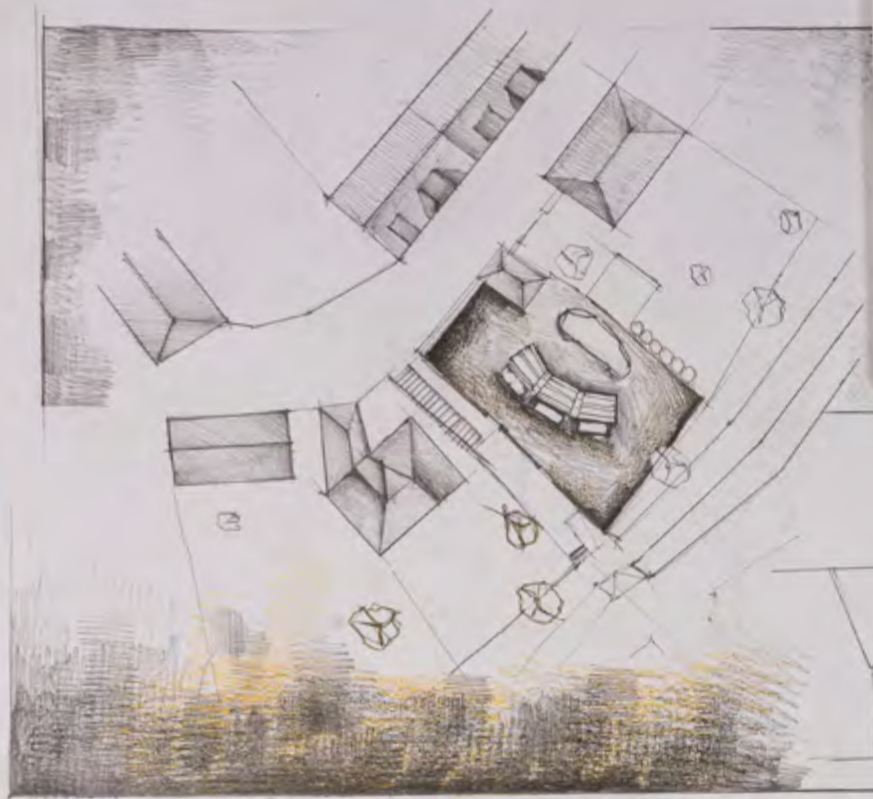




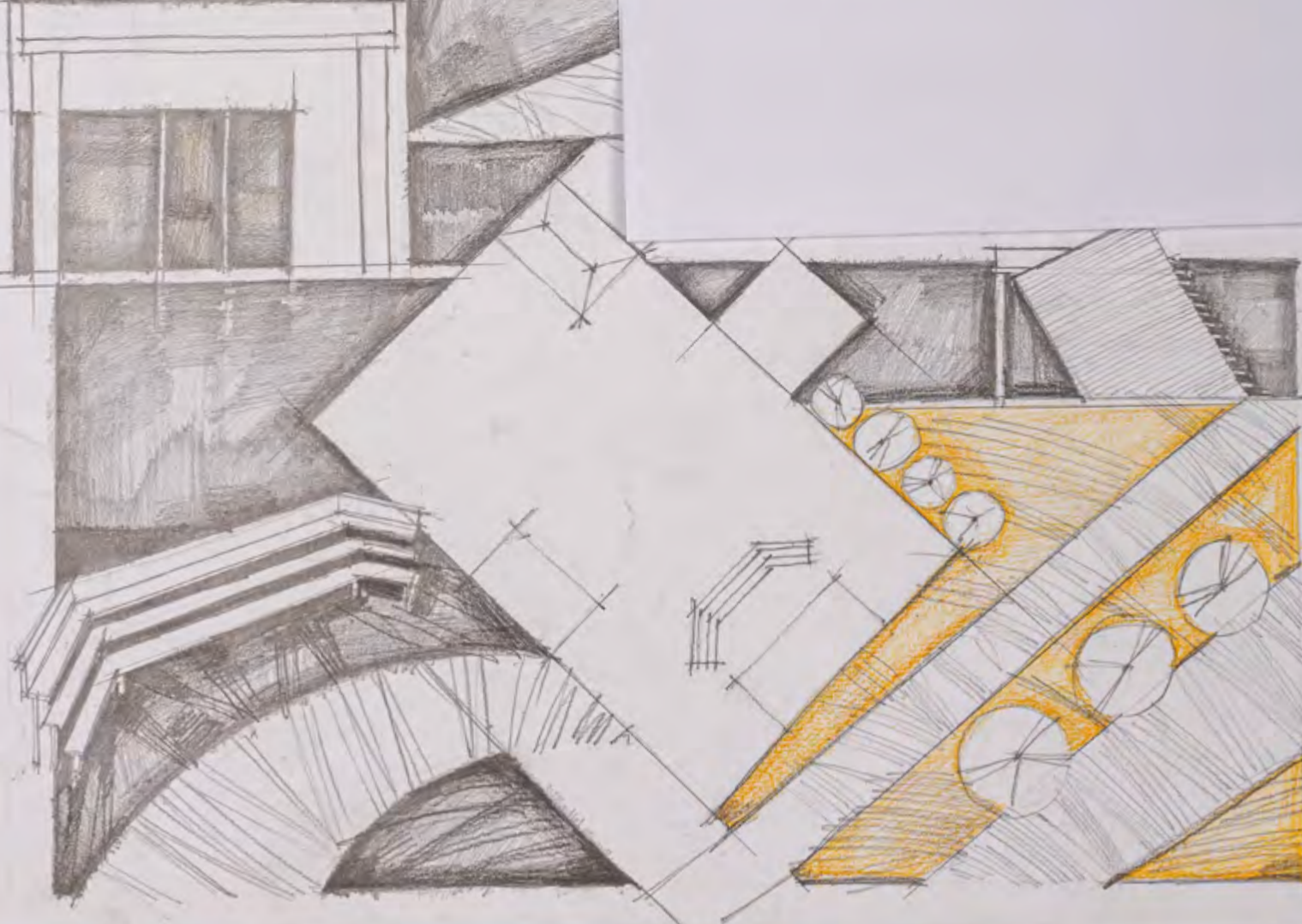
• BRESLA DOGARILOR SE OCUPĂ CU CONTECIONAREA  
BUTAZIELOR, ASTEL AM ALES PENTRU MOBILIERUL  
EXTERIOR, BUTOAIE SECȚIONATE.  
• PENTRU A CREA O ATMOSFERĂ MAI MODERNĂ, ÎNSĂ  
PĂSTRÂND UN „FER DE VECI”, AM ÎNLOCUIT MATERIALE  
PRECUM LEHNUL DE CULOARE ÎNCHISĂ (WENGE) ȘI  
TABLA CORTEN, CARE ÎMI SCHIMBĂ CULOAREA ȘI TEXTURA,  
CREÂND SENSAȚIA DE „TRECERE A TIMPULUI”.







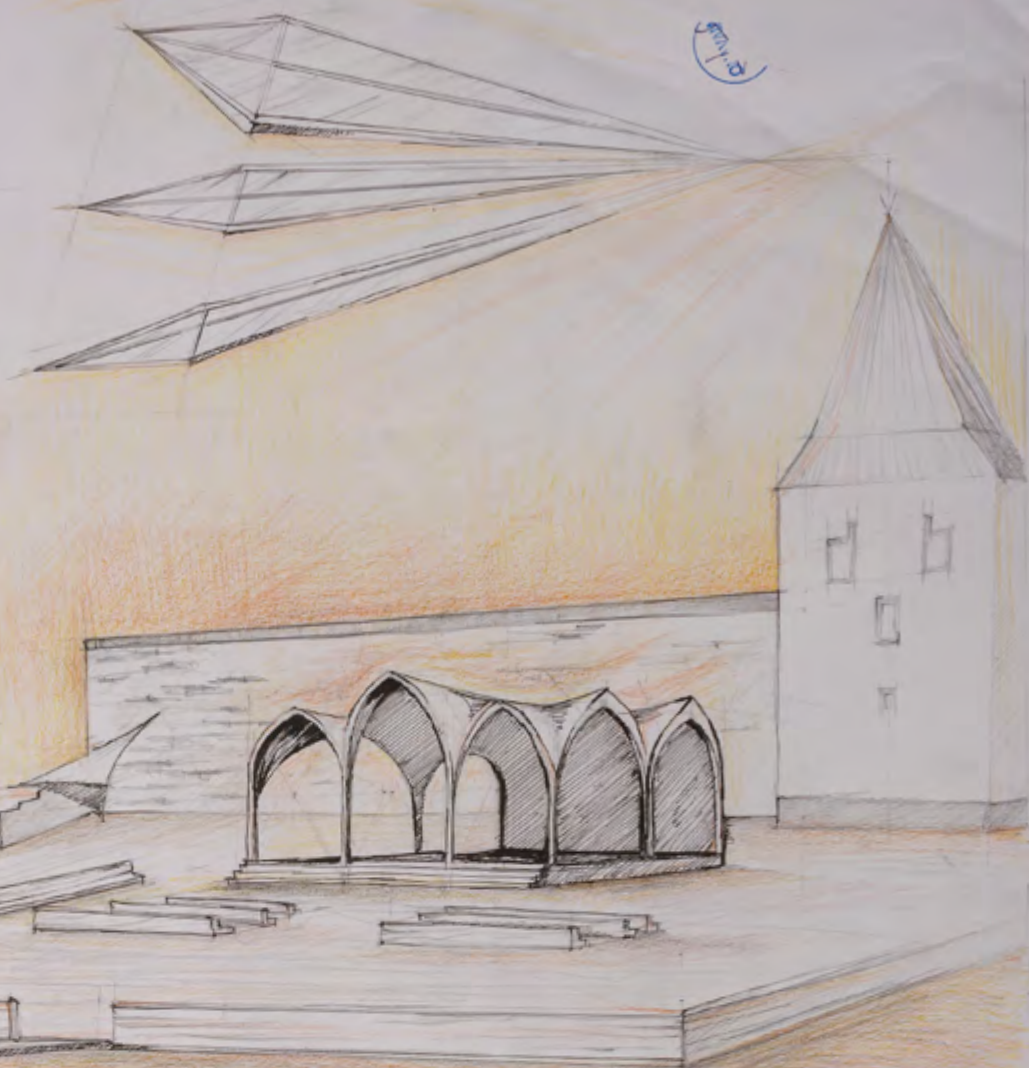
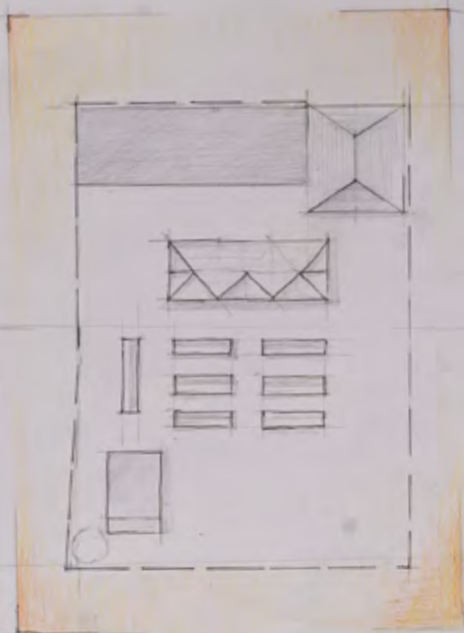




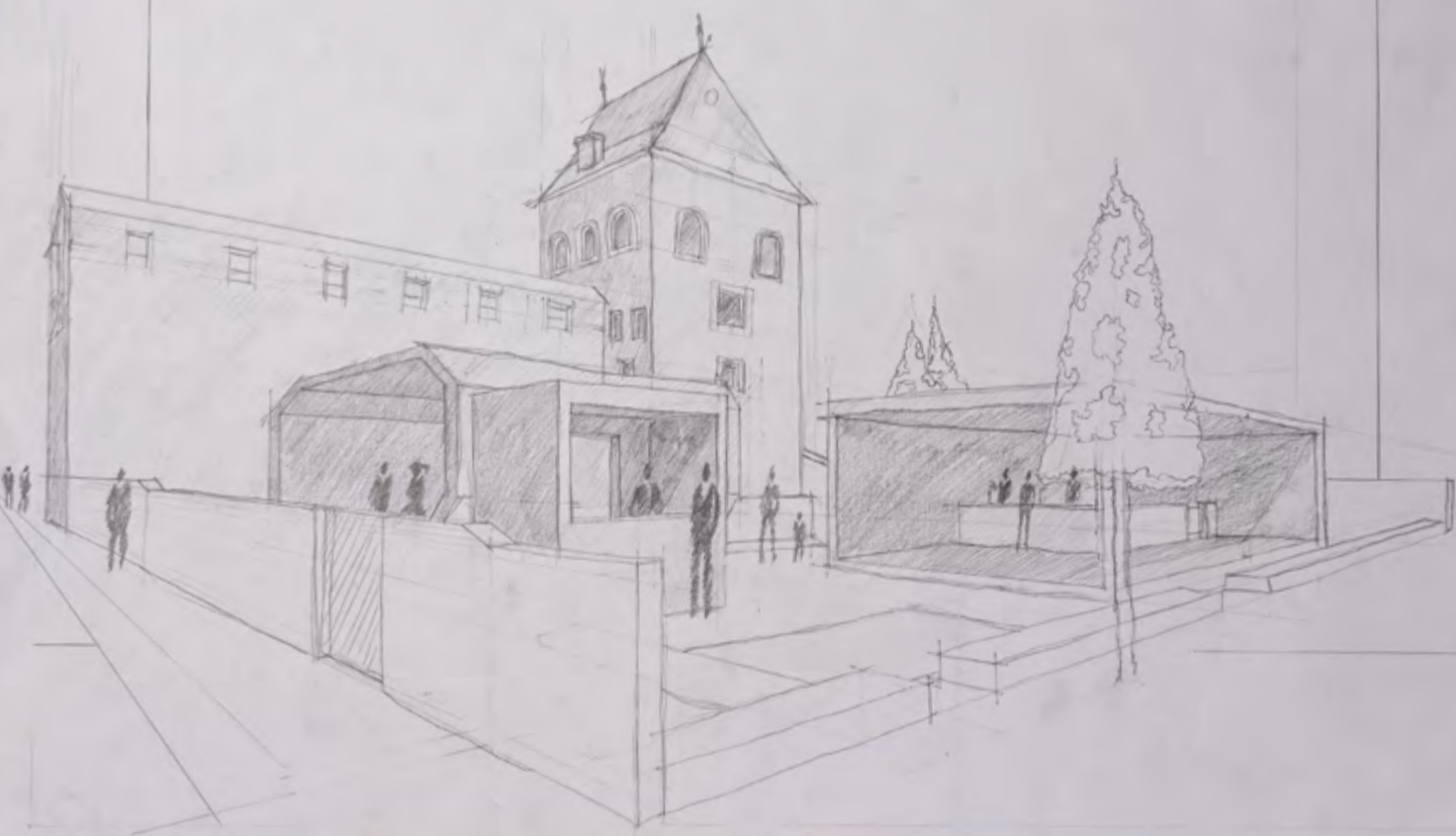
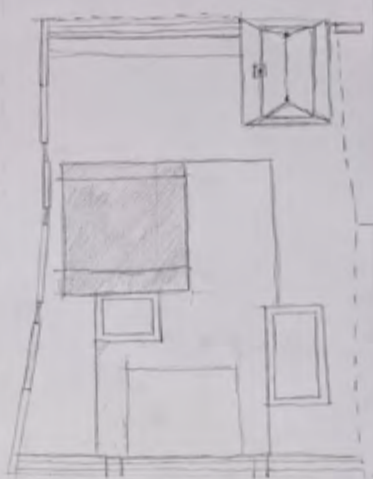




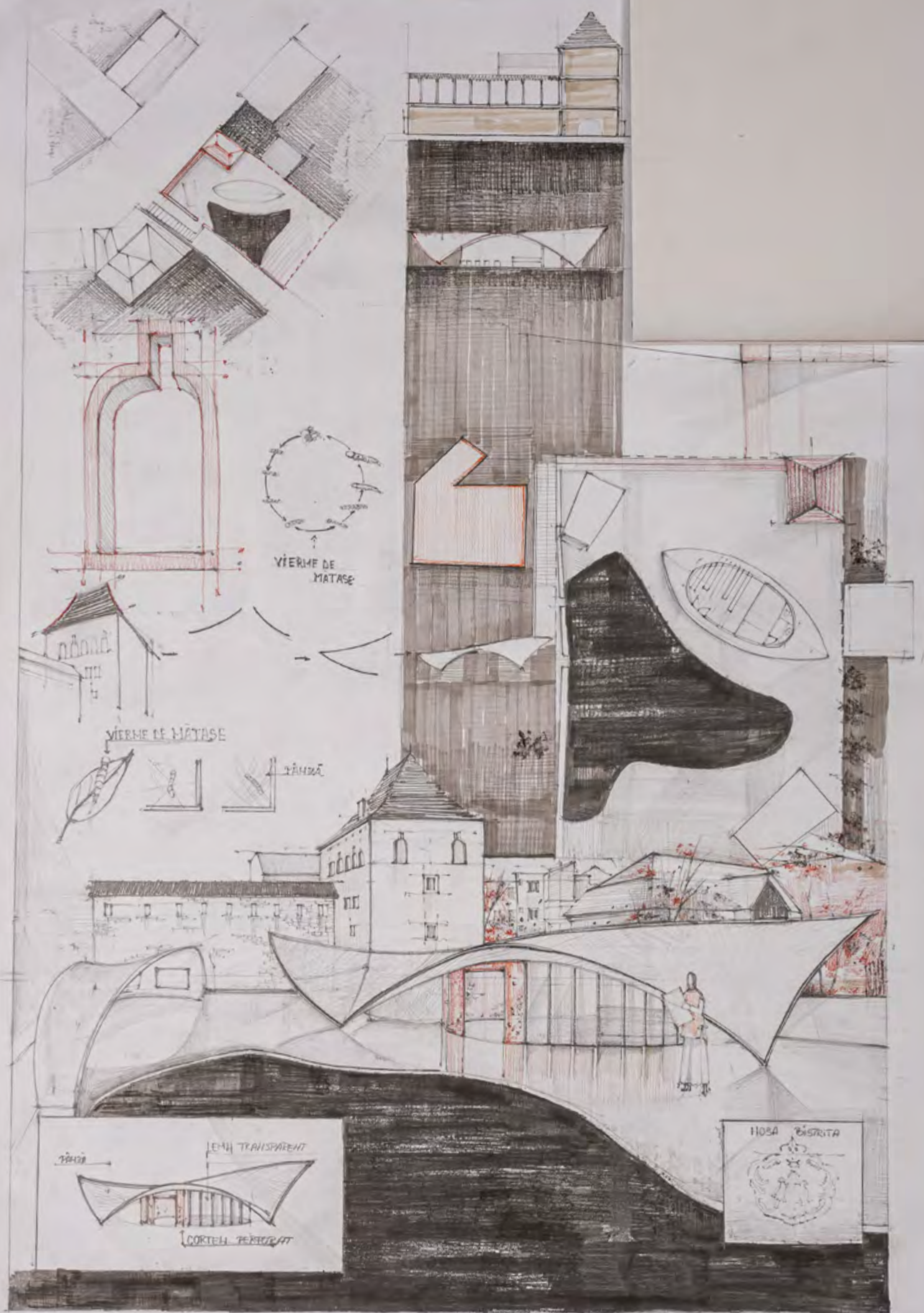




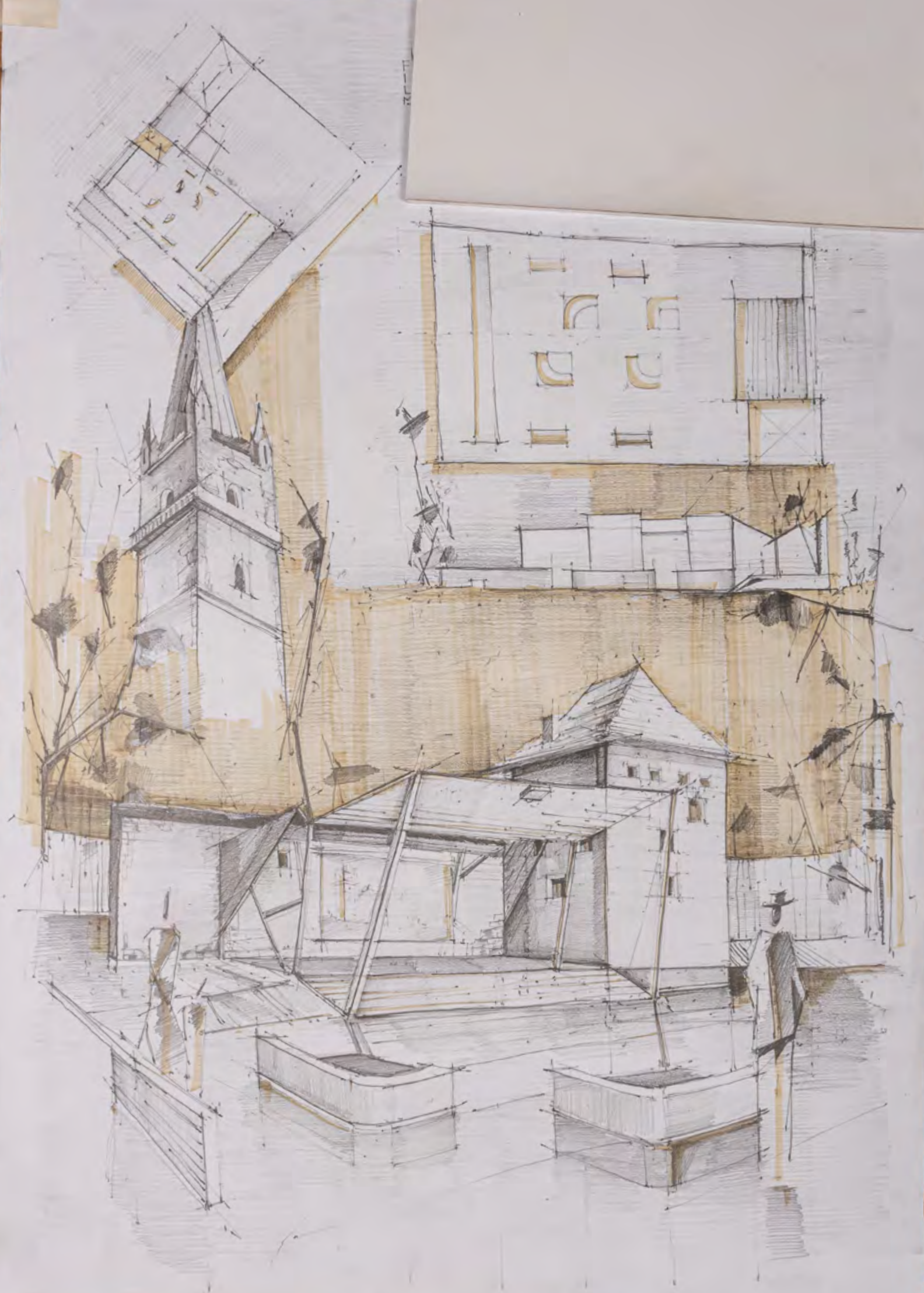




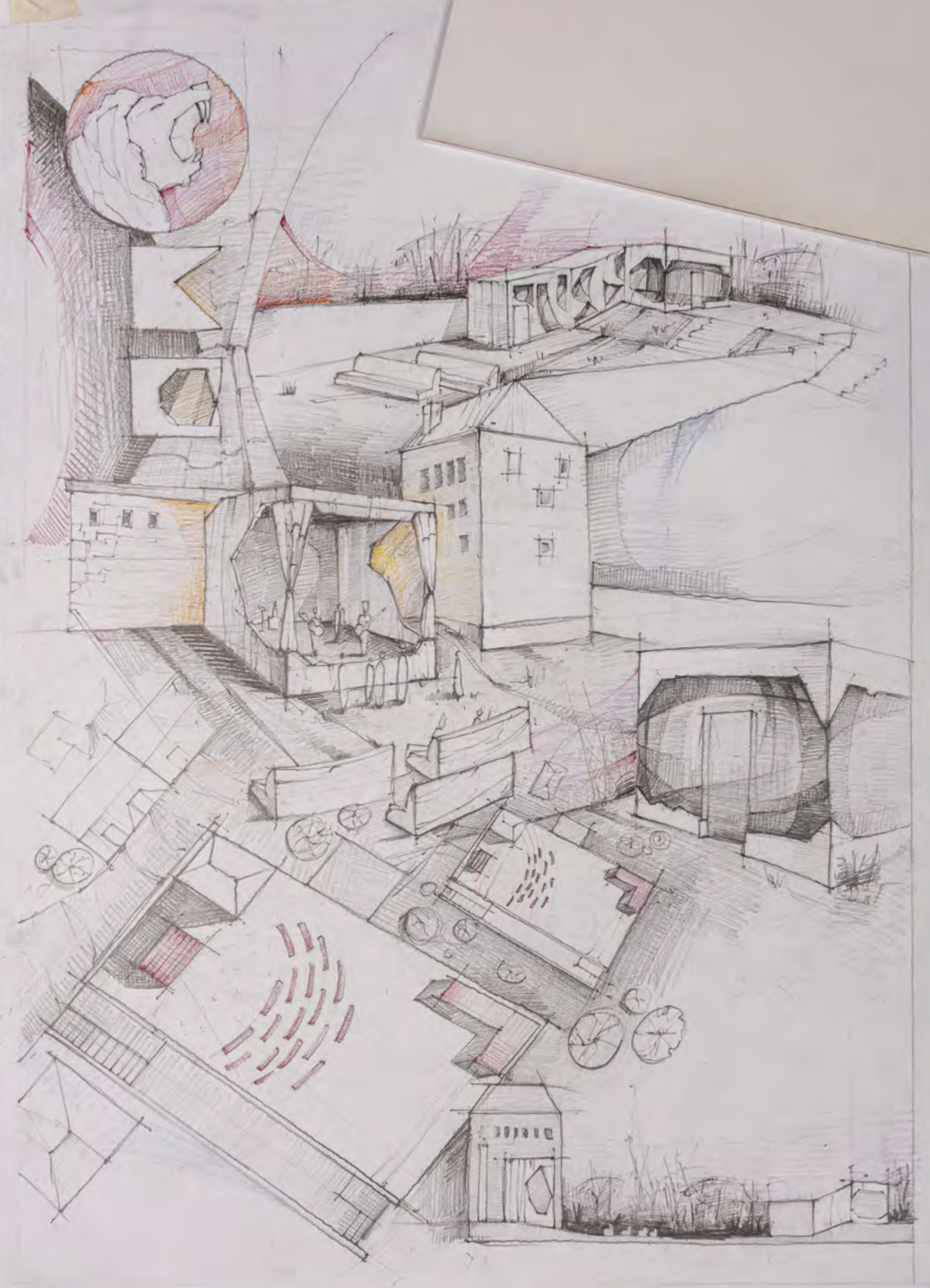




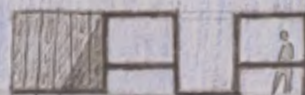
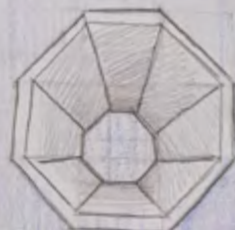
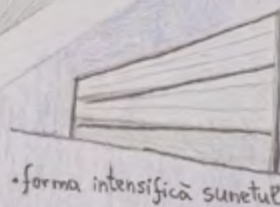
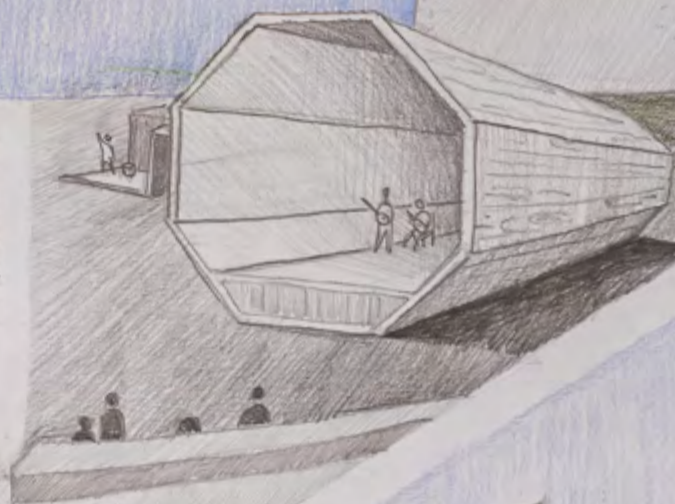
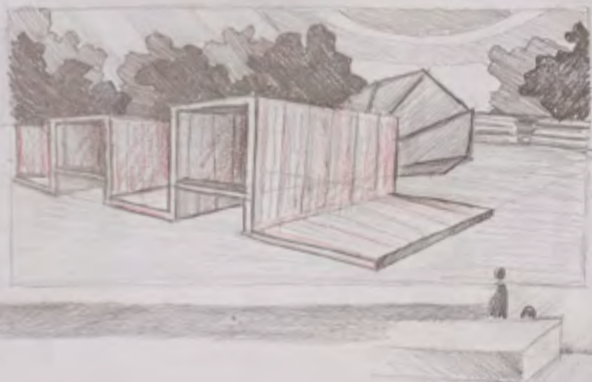
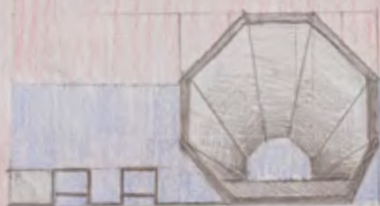
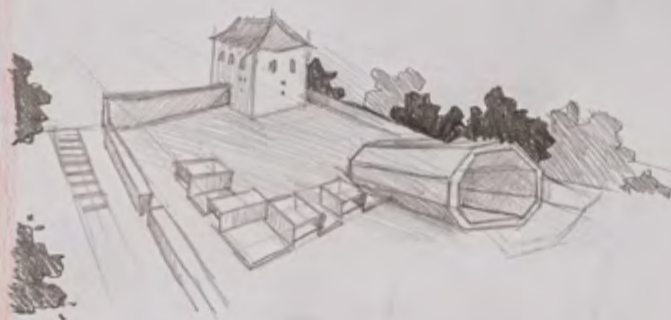
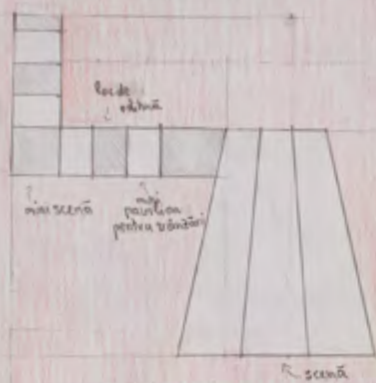




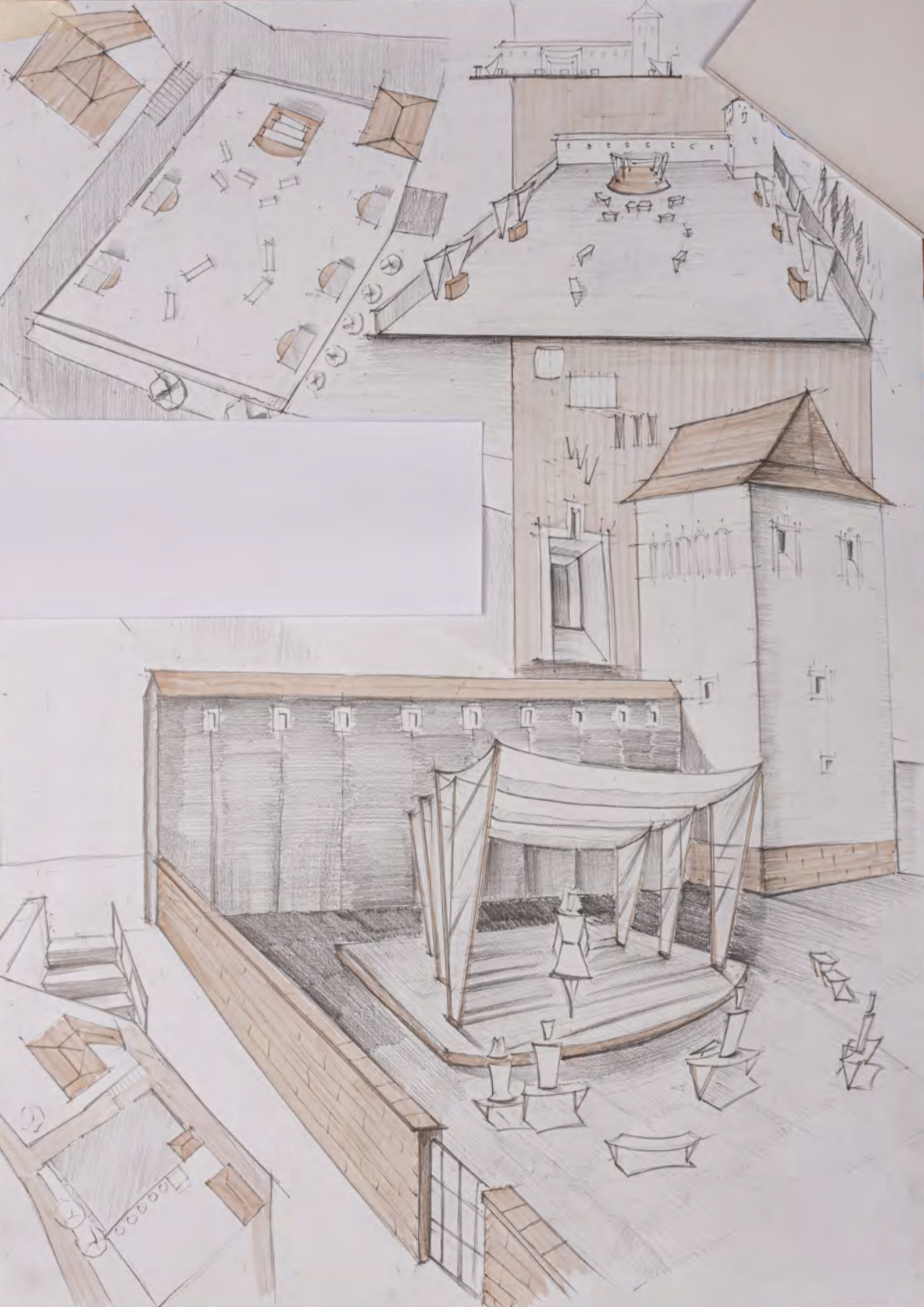




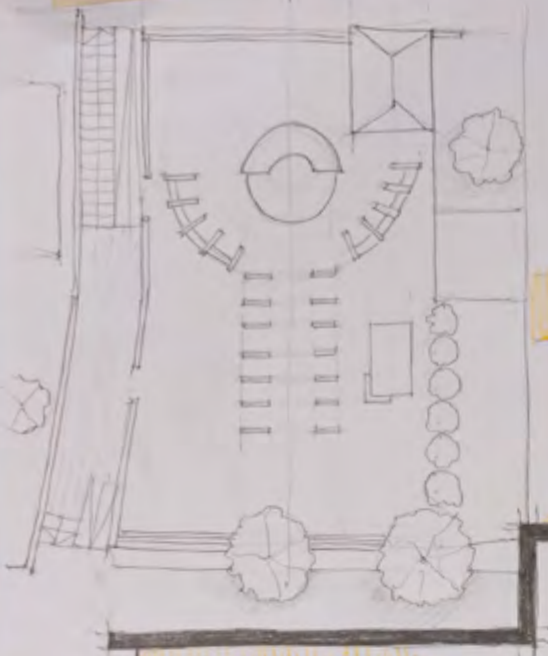




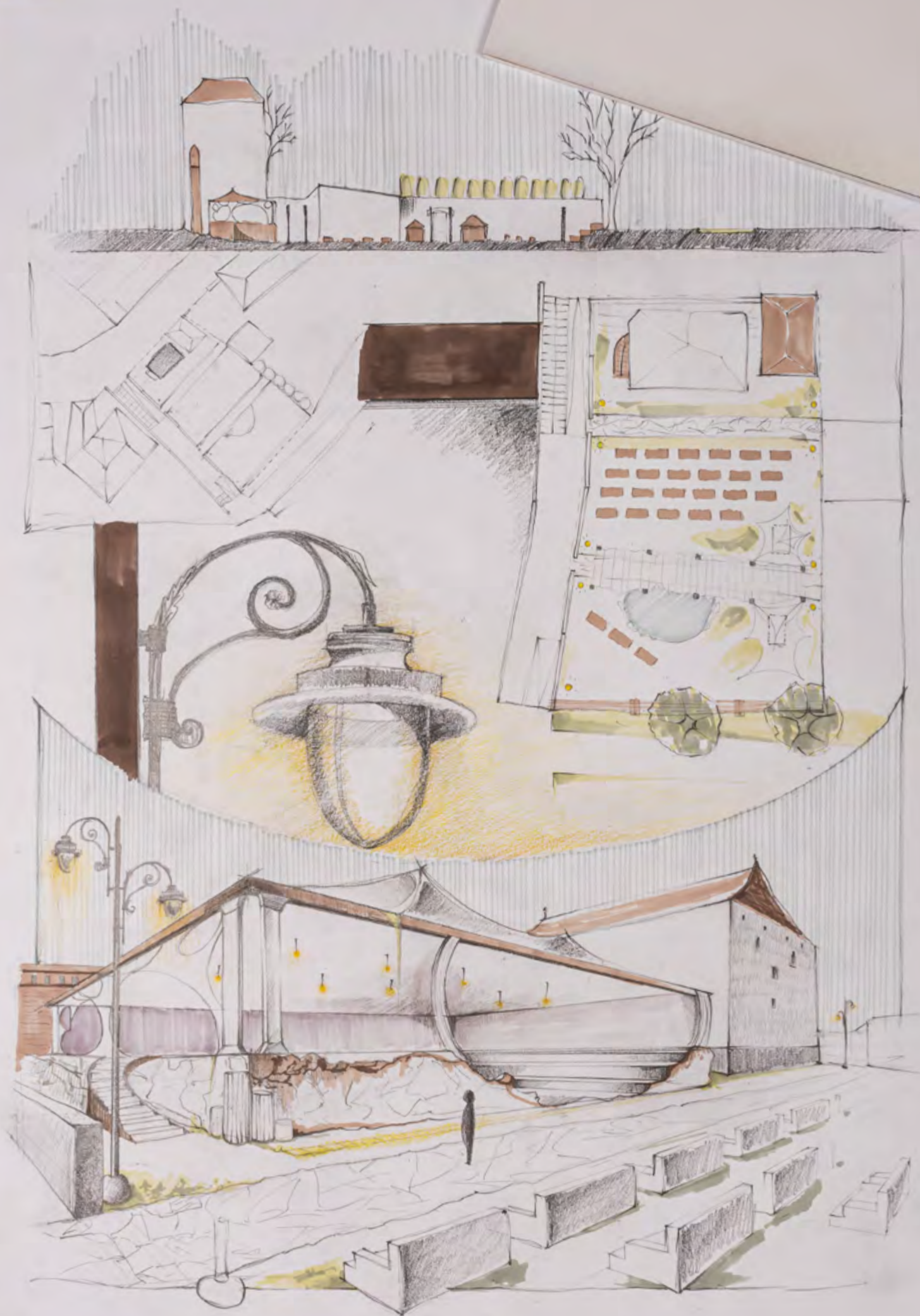




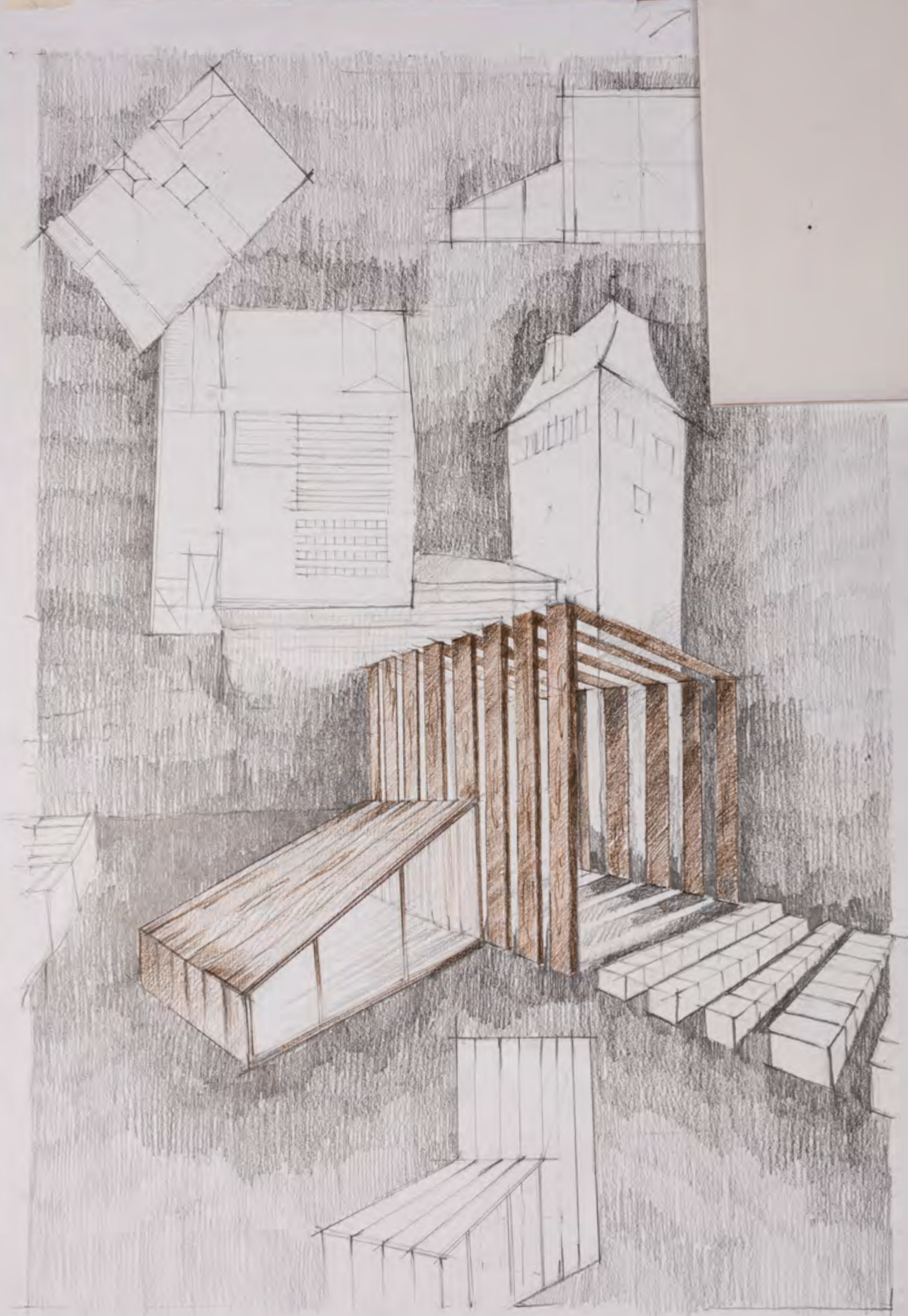




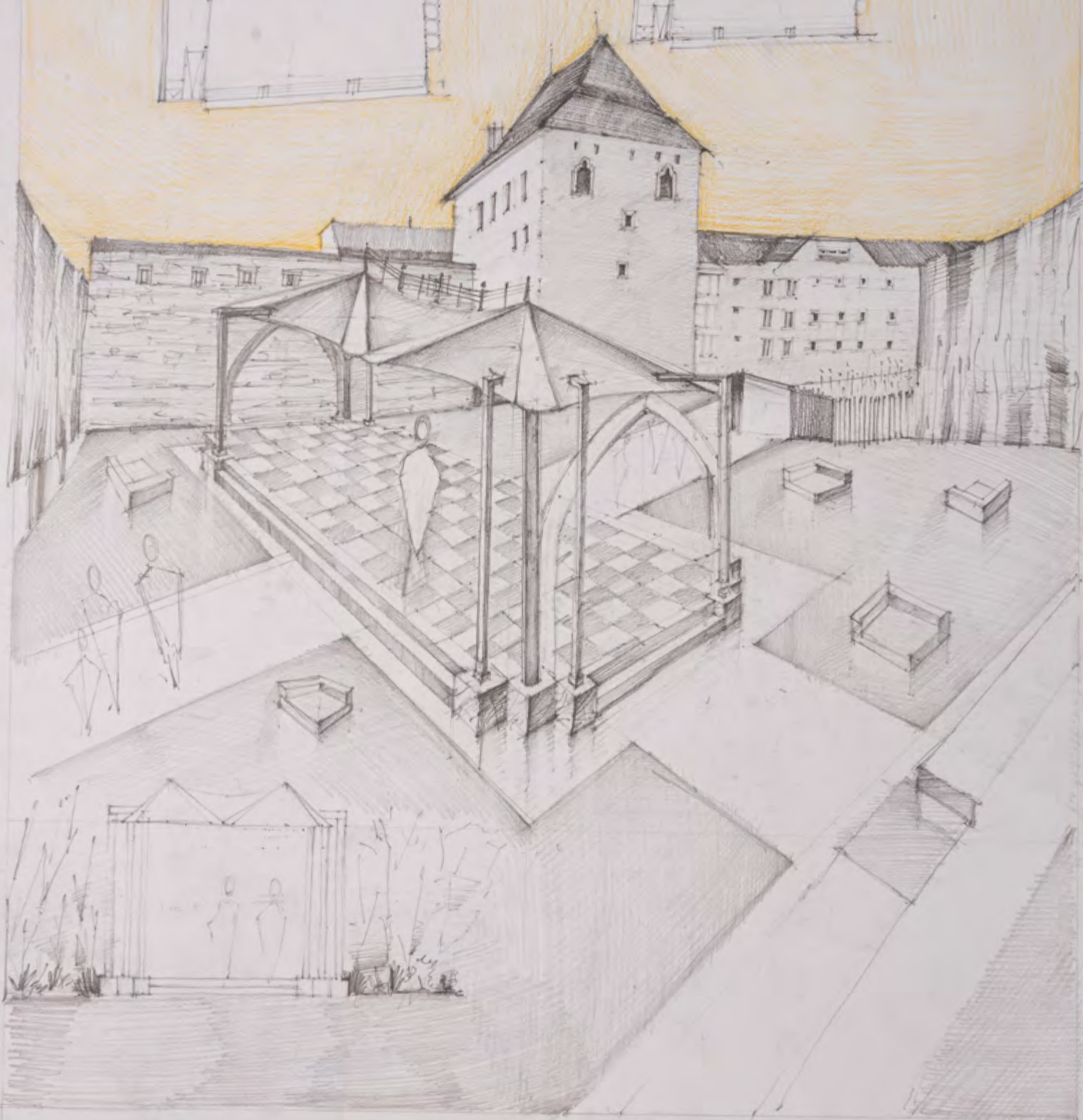
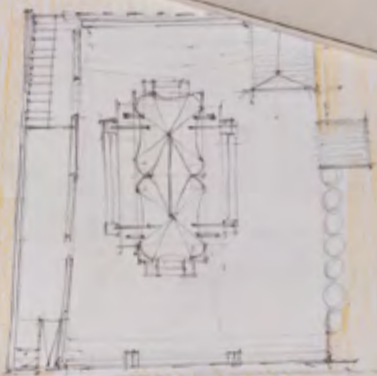
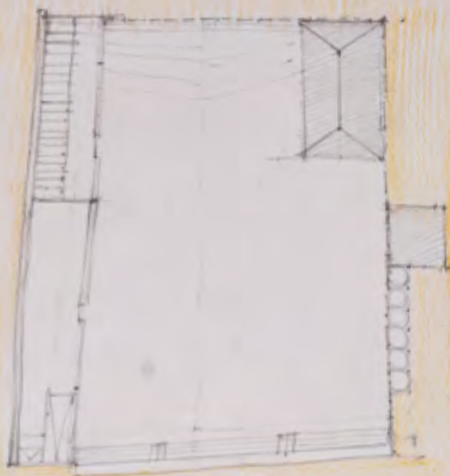




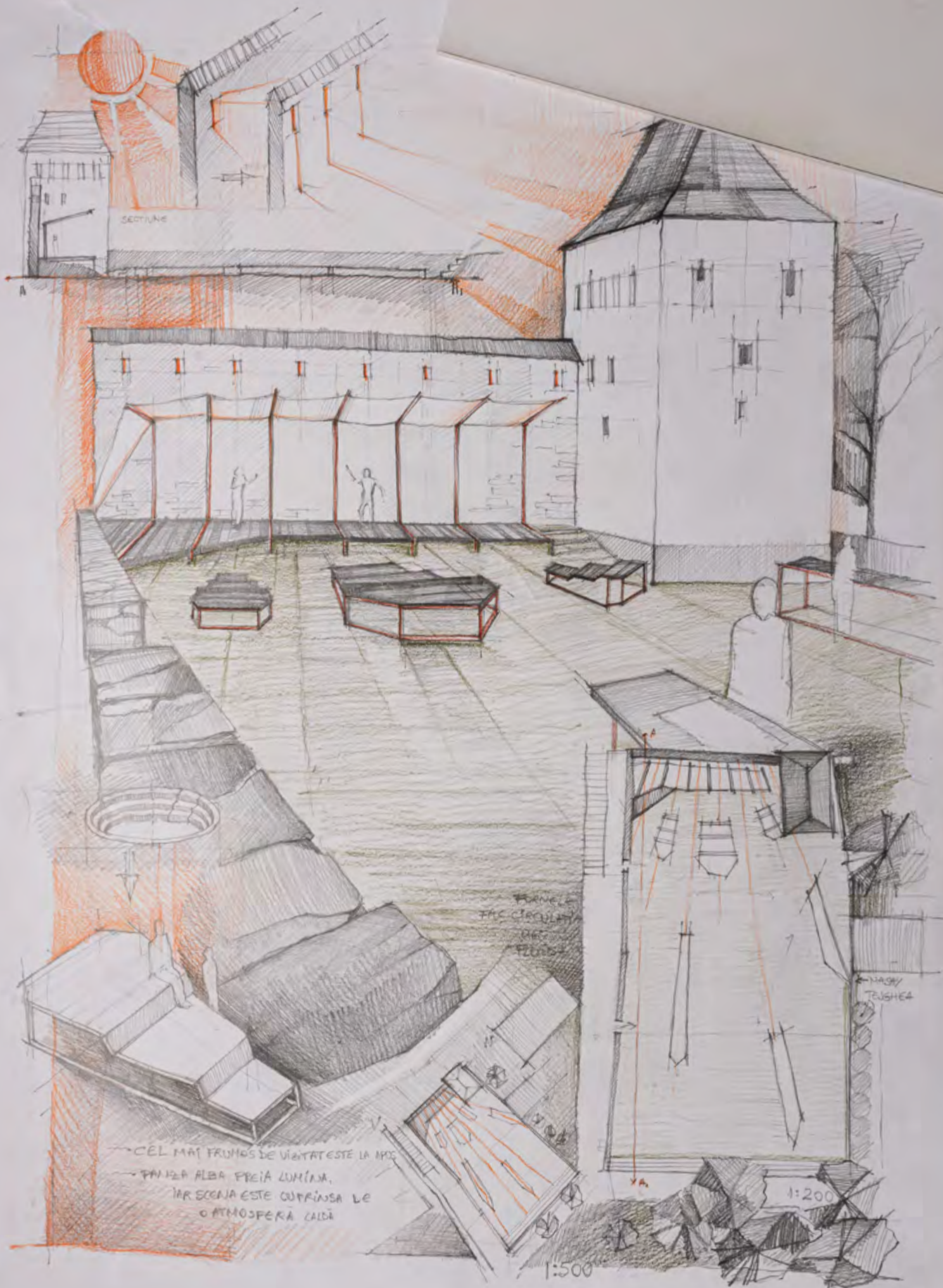




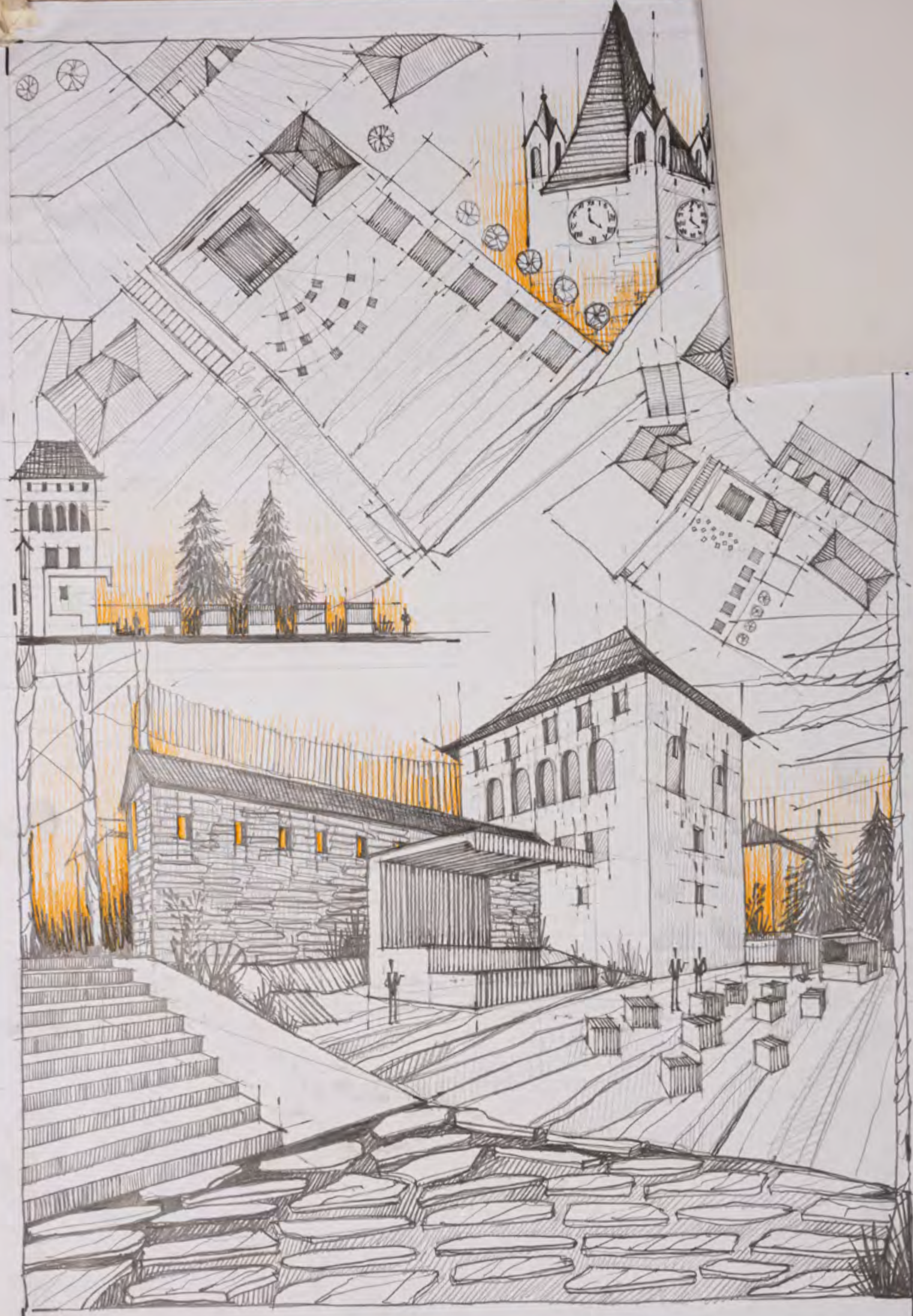








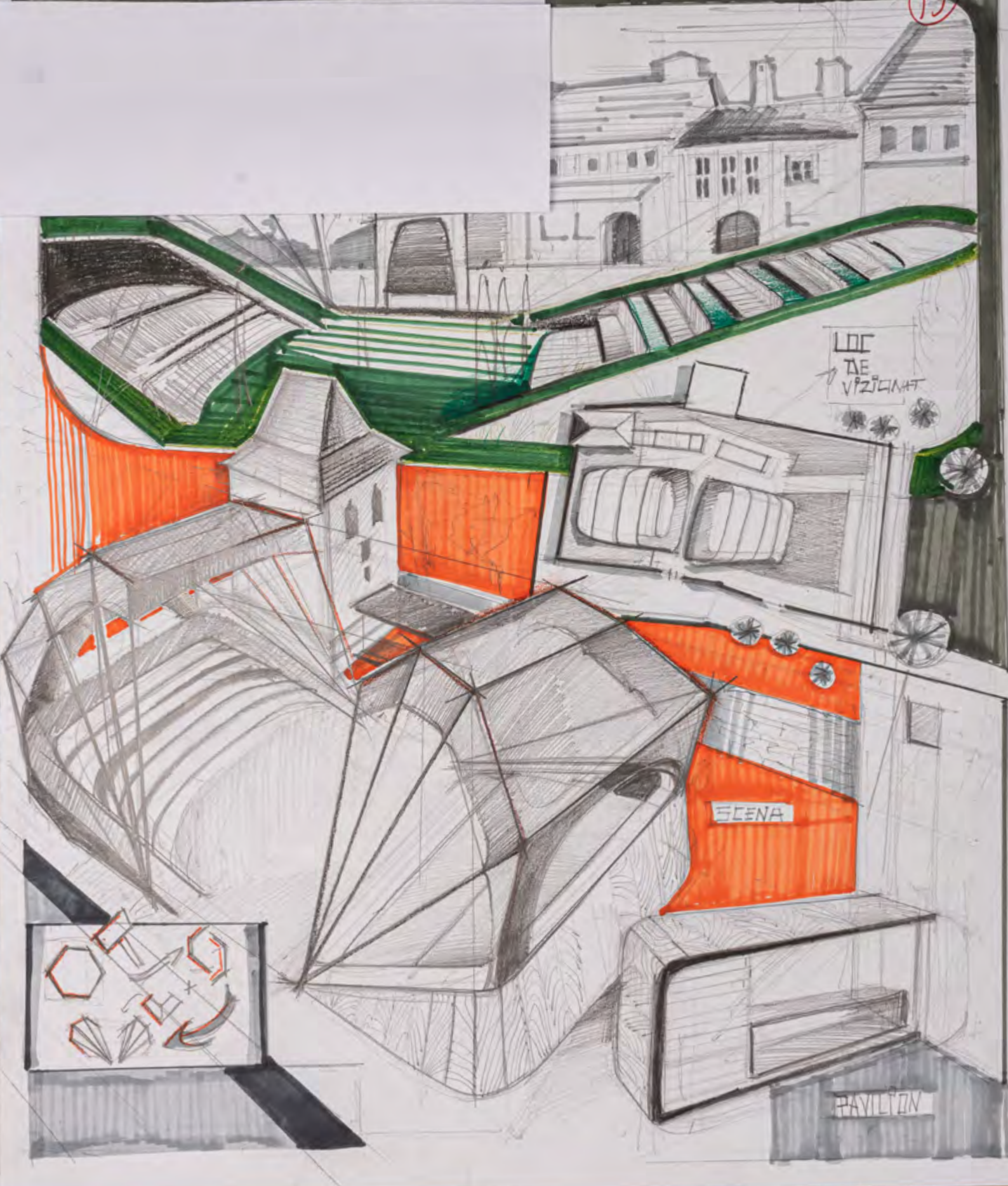








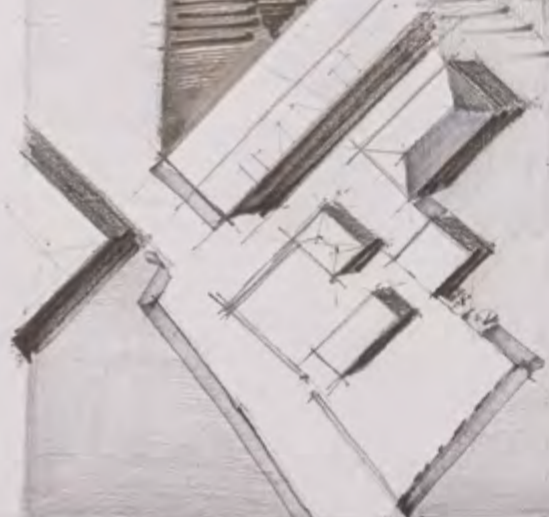
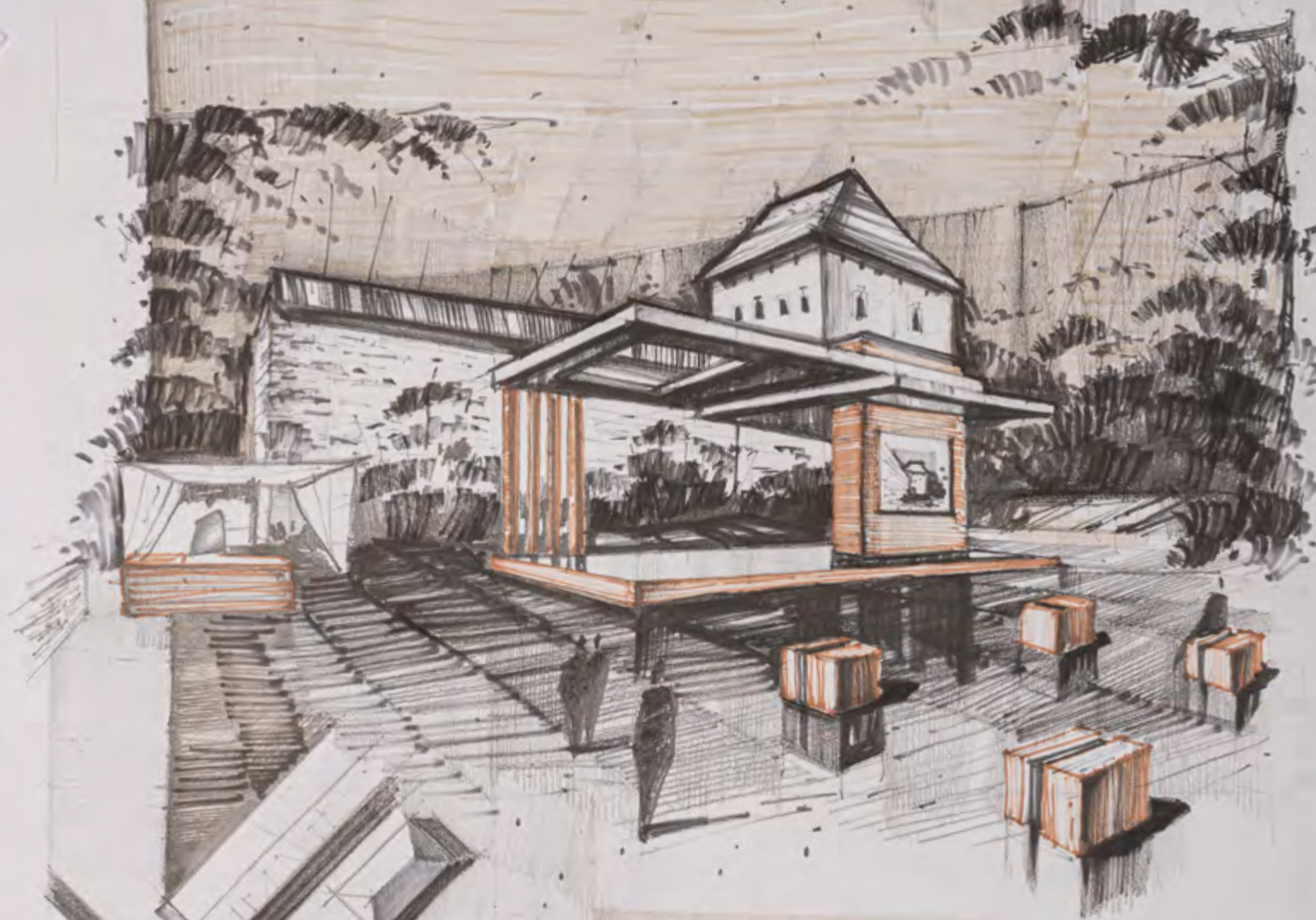








PLAN 1:200

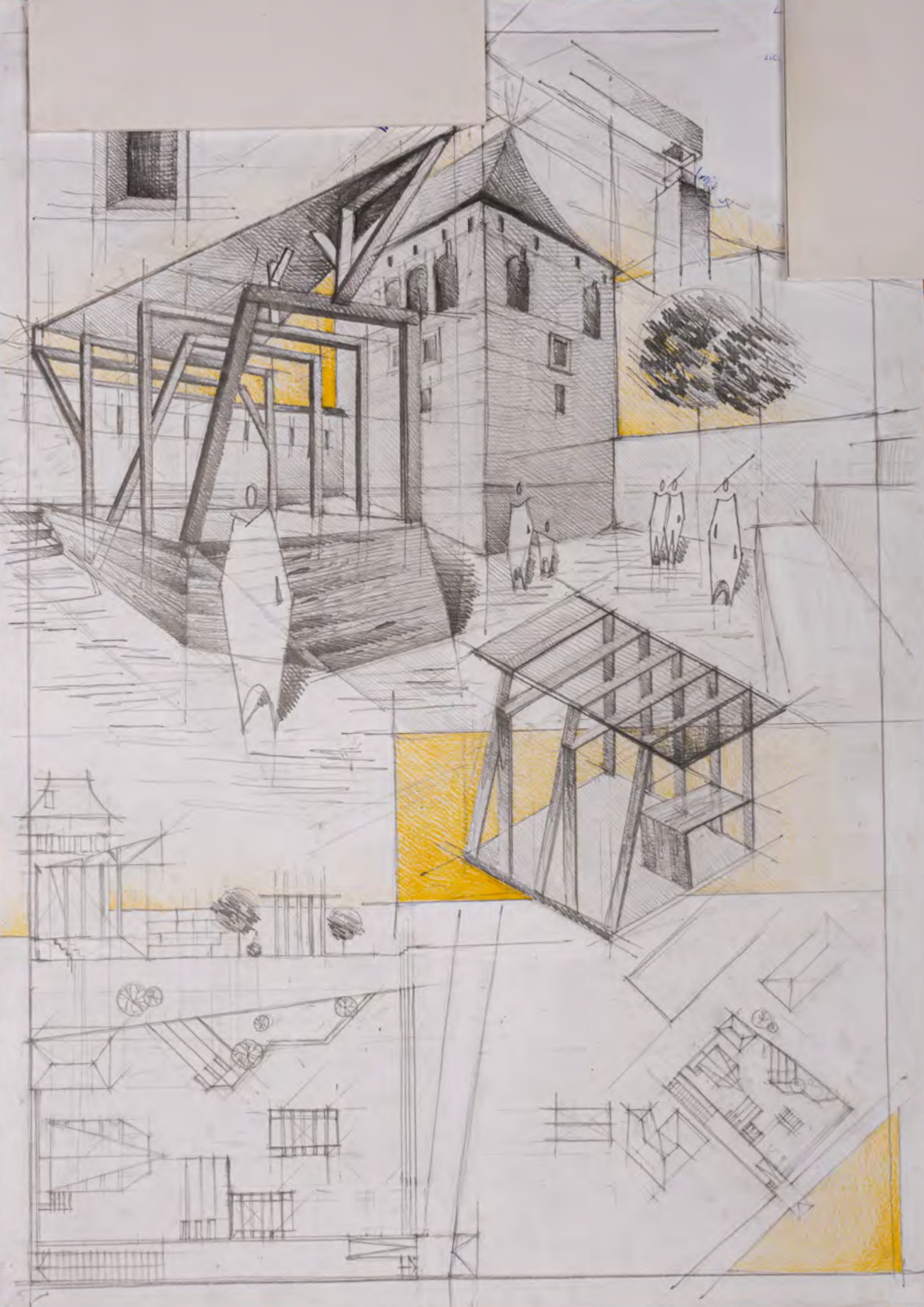


PLAN 1:500

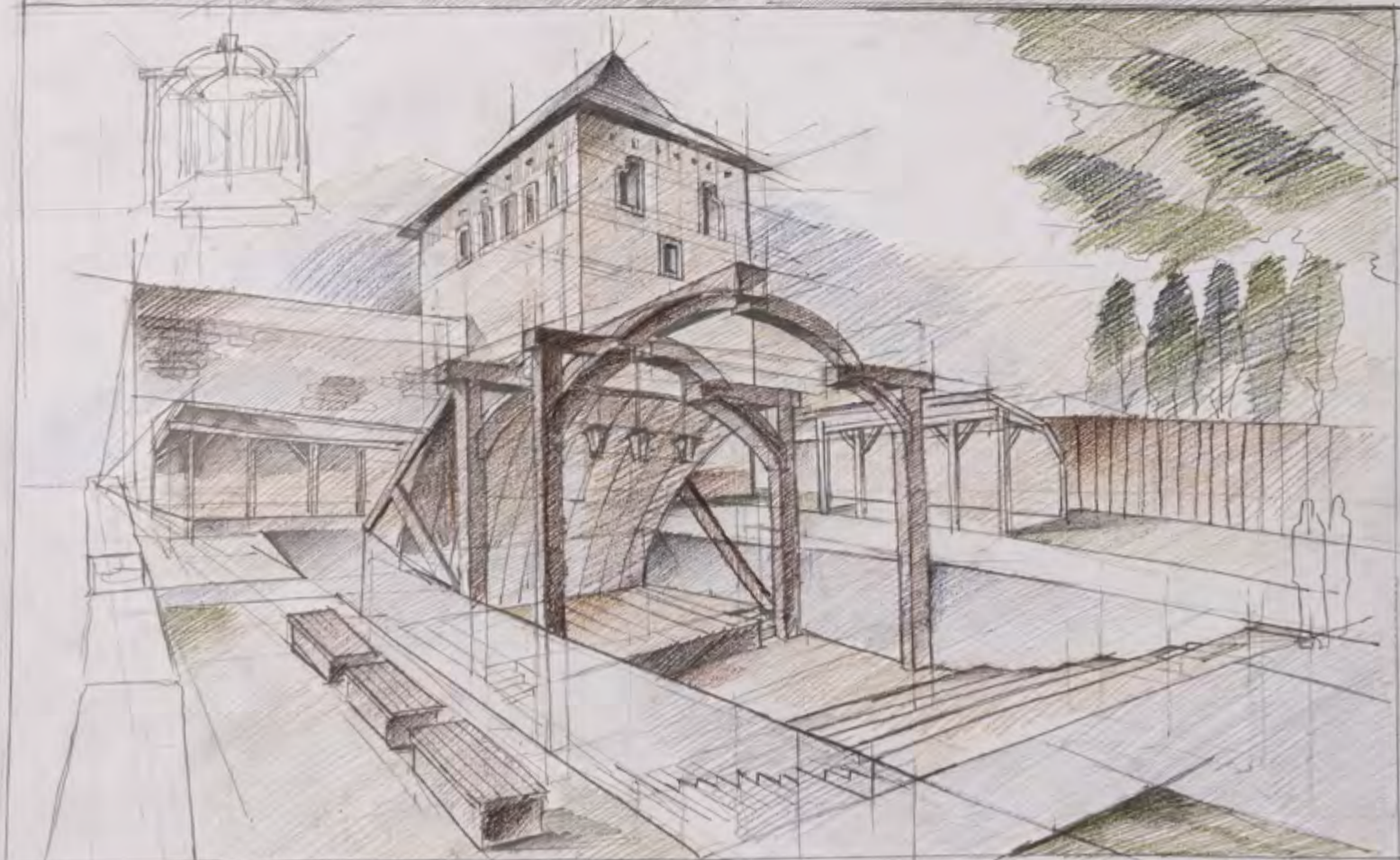
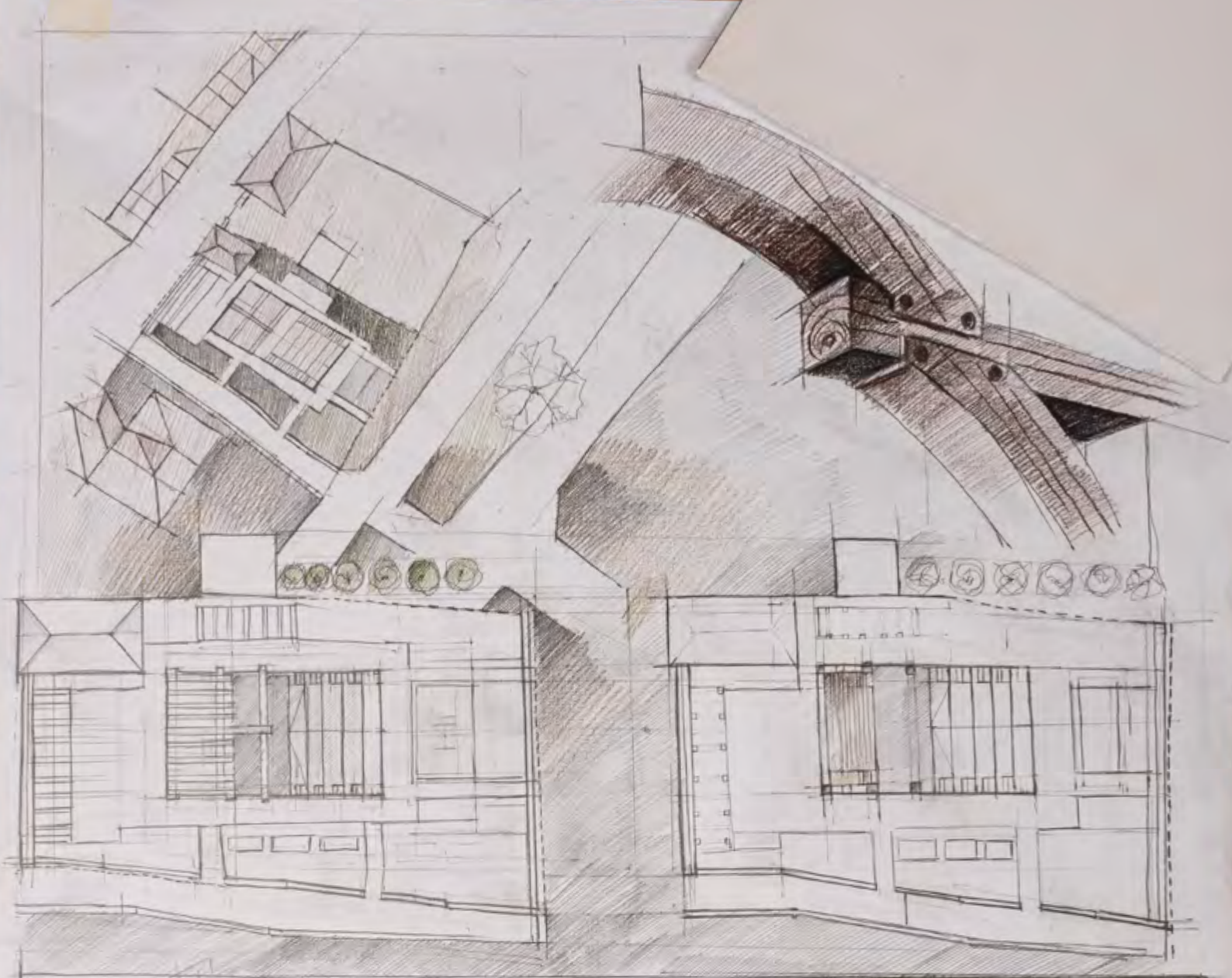


SECTION 1:200











# BISTRITA





